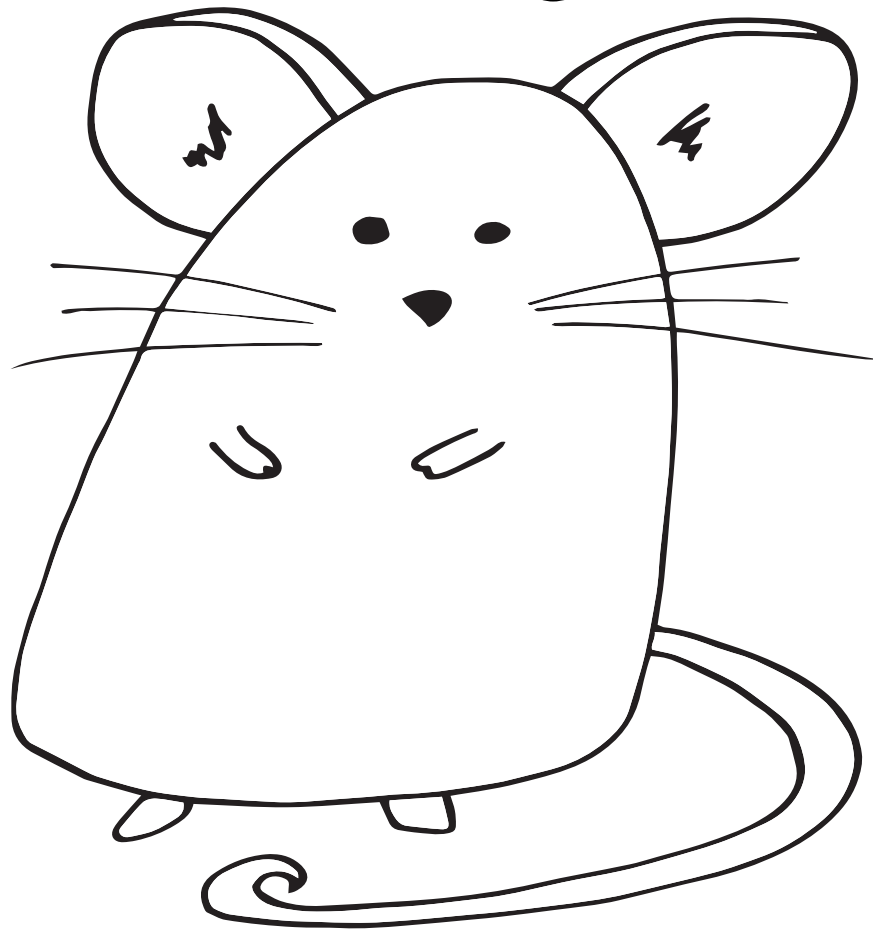


FUN FACTS ABOUT MICE



- Mice tails can grow as long as their bodies.
- Mice use their whiskers to sense changes in temperature and to help feel the surface they are walking along.
- A mouse eats 15 - 20 times a day. Therefore they usually build their homes close to food sources, tending to only travel up to 8 m from their burrows to find food.
- Mice and rats are the most commonly used animals in laboratories for scientific experiments.
- The mouse is a delicacy in eastern Zambia and northern Malawi, where they are eaten as a source of protein.
- Because they have so many predators mice usually only live for about six months in the wild. In a lab or as a pet they can live for up to two years.